

CONCEPT PLAN  N.T.S.

Portfolio of Landscape Design

Richard Shelton, Landscape Design



Arkansas State Highway 72 (Slack St.)

80' R.O.W.

RW



SCALE 1" = 20 FEET

Lot 1

Lot 2

Lot 3

Lot 4

Lot 5
CONCEPT DESIGN

NO.	REVISIONS	BY

SUMMIT MEADOWS COMM. 1
 HIGHWAY 72, PEA RIDGE, BENTON COUNTY, AR
 JOSH COPHER, PLANTATION LLC

PROVISION
 Land Planning, Development, Construction, Brokerage
 Focus Development Design, Inc.
 2003 Homestead Road, Suite D, Rogers, AR 72768
 Telephone 479.218.1100 Fax 479.218.0003
 A Division of Provision Enterprises, Inc.

DESIGN BY	CHECKED BY	DATE	DATE
R. SHELTON	B. TIDGLEY	07-10-07	MAY 22, 2007
SHEET	1	OF	1

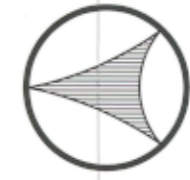


50' R/W
BY THIS
PLAT
100' INGRESS EGRESS EASEMENT
BY THIS PLAT

NE 1/4 NW 1/4
11.28 ACRES

SE 1/4 NW 1/4
13.74 ACRES

1/4 NW 1/4
20.06 ACRES



SCALE NOT TO SCALE

CONCEPT PLAN

NO.	REVISIONS	BY

PLEASANT RETIREMENT VILLAGE
 ROGERS, BENTON COUNTY, AR
 MR. CHARLES REAVES

F D C J S
 DEVELOPMENT DESIGN, INC.
 LAND DEVELOPMENT • RESIDENTIAL • COMMERCIAL DESIGN

2003 Horsesham Road, Suite 9 Rogers, AR 72756
 Telephone 479.616.1105 Fax 566.254.0553
 An affiliate of Provision Enterprises, Inc.

SHEET	1	of 1	
DRAWN BY:	R. SHELTON	DATE:	JULY 26, 2007
CHECKED BY:	G. CARNAHAN	JOB #:	07-109



Green Valley PUD, Fayetteville, AR Concept

POTENTIAL UNIVERSITY OF ARKANSAS
NATURE TRAILS AND THE WEDINGTON GAP
OVERLOOK



S. RAINBOW ROAD
12' SIDE WALK
12' SIDE WALK

Hampton Estates
Cave Springs, AR



HAR-BER LAKE PARK

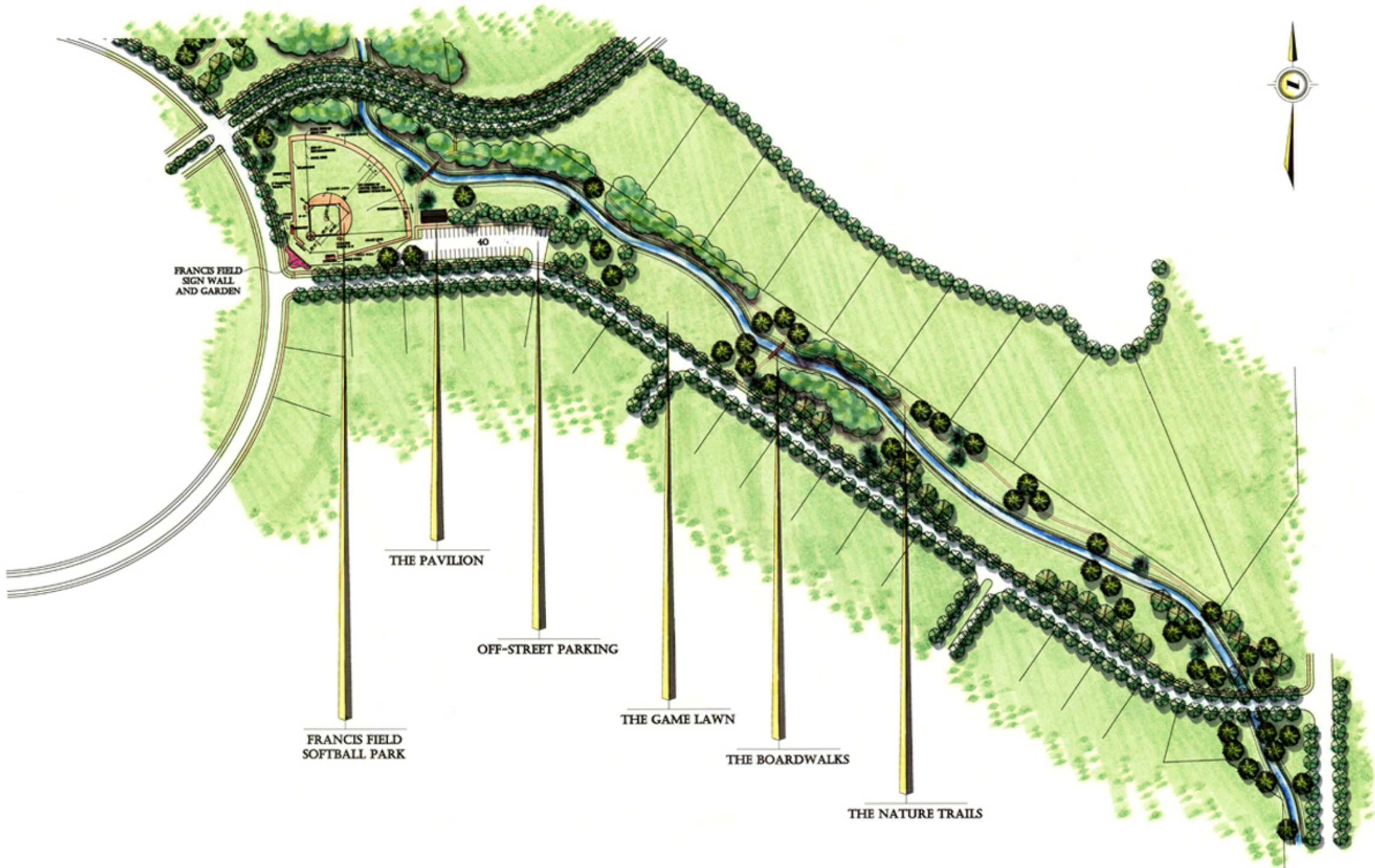
HAR-BER LAKE AND JTL PARKWAY
 HAR-BER MEADOWS, SPRINGDALE
 WASHINGTON COUNTY, ARKANSAS

F J C U S
 DEVELOPMENT DESIGN, INC.
 2003 Horsebarn Road, Suite 9, Rogers, AR 72756
 Telephone 479.616.1105 Fax 866.254.0953
 An affiliate of Provenance Enterprises, Inc.

DESIGN BY:	R. SIBLTON
CHECKED BY:	G. CARNAHAN
DATE:	AUGUST 15, 2007
JOB #:	08-302
SCALE:	1" = 40' - 0"

SHEET
1
 OF 1

SCALE 1" = 40' - 0"



FRANCIS FAIR PARK SOUTH

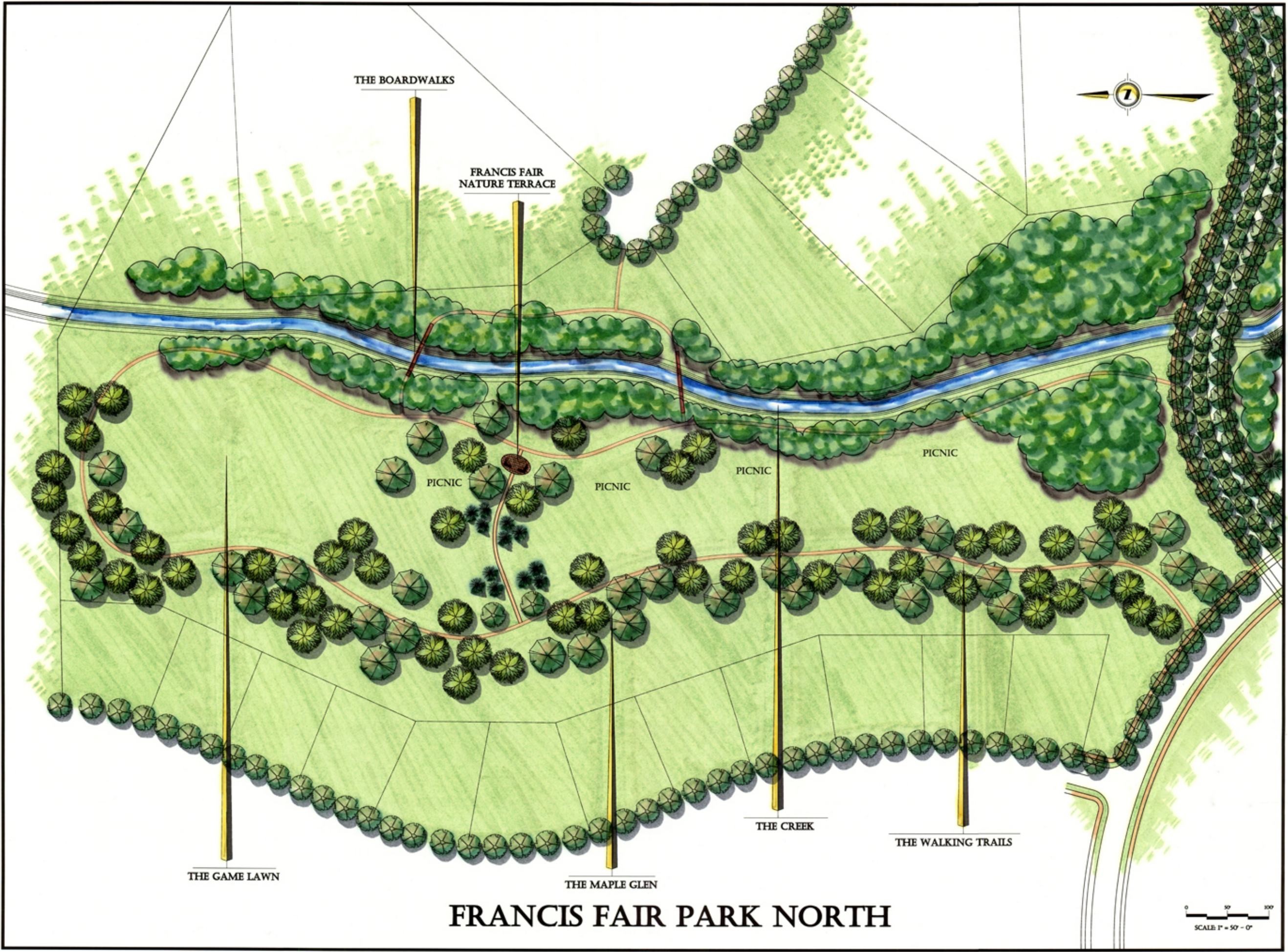
FRANCIS FAIR PARK SOUTH
 HAR-BER MEADOWS, SPRINGDALE
 WASHINGTON COUNTY, ARKANSAS

F O C U S
 DEVELOPMENT DESIGN, INC.
 2003 Homebarn Road, Suite 9, Rogers, AR 72750
 Telephone: 479.616.1105 Fax: 866.254.0553
 An affiliate of Provision Enterprises, Inc.

DRAWN BY: B. SHELTON	CHECKED BY: C. CANNAHAN
DATE: MAY 26, 2008	JOB #: 08-202
SCALE: 1" = 100' - 0"	

SHEET
2
 OF 2

SCALE: 1" = 100' - 0"



FRANCIS FAIR PARK NORTH

FRANCIS FAIR PARK NORTH
 HAR-BER MEADOWS, SPRINGDALE
 WASHINGTON COUNTY, ARKANSAS

F O C U S
 DEVELOPMENT DESIGN, INC.
 2003 Horseham Road Suite 9, Rogers, AR 72750
 Telephone 479.616.1105 Fax 866.254.0553
 An affiliate of Provision Enterprises, Inc.

DRAWN BY: B. SHELTON	CHECKED BY: G. CARNAHAN	DATE: MAY 26, 2008	JOB #: 06-102	SCALE: 1" = 50' - 0"
-------------------------	----------------------------	-----------------------	------------------	-------------------------

SHEET	1	OF	2
-------	---	----	---



HYDE PARK COMMUNITY CENTER
 WALLIS ROAD, ROGERS, BENTON COUNTY, AR
 MR. BRANDON SEWELL, SEWELL FAMILY

SCALE:
 $\frac{1}{16}$ in = 1'-0"

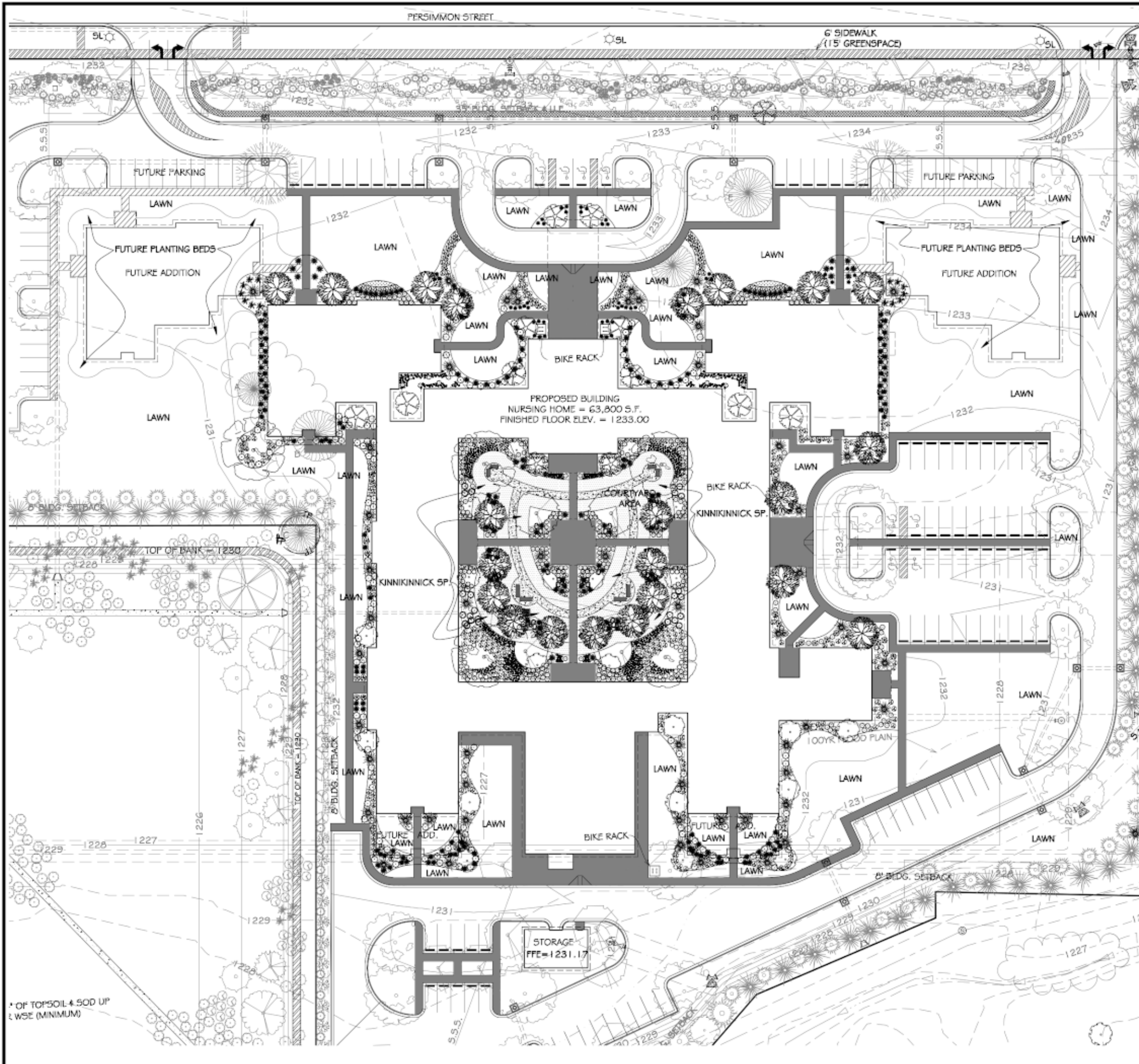
RICK SHELTON
 DESIGN

1963 USA LANE, FAYETTEVILLE, AR 72703
 Telephone (479) 530-6909 Fax (479) 571-2535
 www.ricksheltondesign.com

HYDE PARK

THE PLACE WHERE PEOPLE GATHER
TO EXPERIENCE NATURE





PLANT SELECTION

-  GINKGO BILOBA
-  LITTLE LEAF LINDEN
-  FOREST PANSY REDBUD
-  BLOOD RED JAPANESE MAPLE
-  LIME GREEN JAPANESE MAPLE
-  COLOGREEN JUNIPER
-  BURGUNDY WEIGELA
-  MAIDEN GRASS
-  BABY BLUE CYPRESS
-  RED KNOCKOUT ROSE
-  FRINGE FLOWER
-  LIMEMOUND SPIREA
-  SNOWMOUND SPIREA
-  EMERALD SPREADER JAPANESE YEW
-  LILY OF THE VALLEY
-  PURPLE FOUNTAIN GRASS
-  LIRIOPE
-  LANDSCAPE BOULDER
-  CONCRETE WALKWAYS
-  TURF GRASS
-  SEASONAL ANNUAL PLANTING AREAS

LANDSCAPE NOTES:

GARDENS ON PERSIMMON
 PERSIMMON DR., FAYETTEVILLE, AR

**RICK SHELTON
 DESIGN**



1963 USA LANE, FAYETTEVILLE, AR 72703
 Telephone (479) 530-6909 Fax (479) 678-2623
 www.ricksheltondesign.com

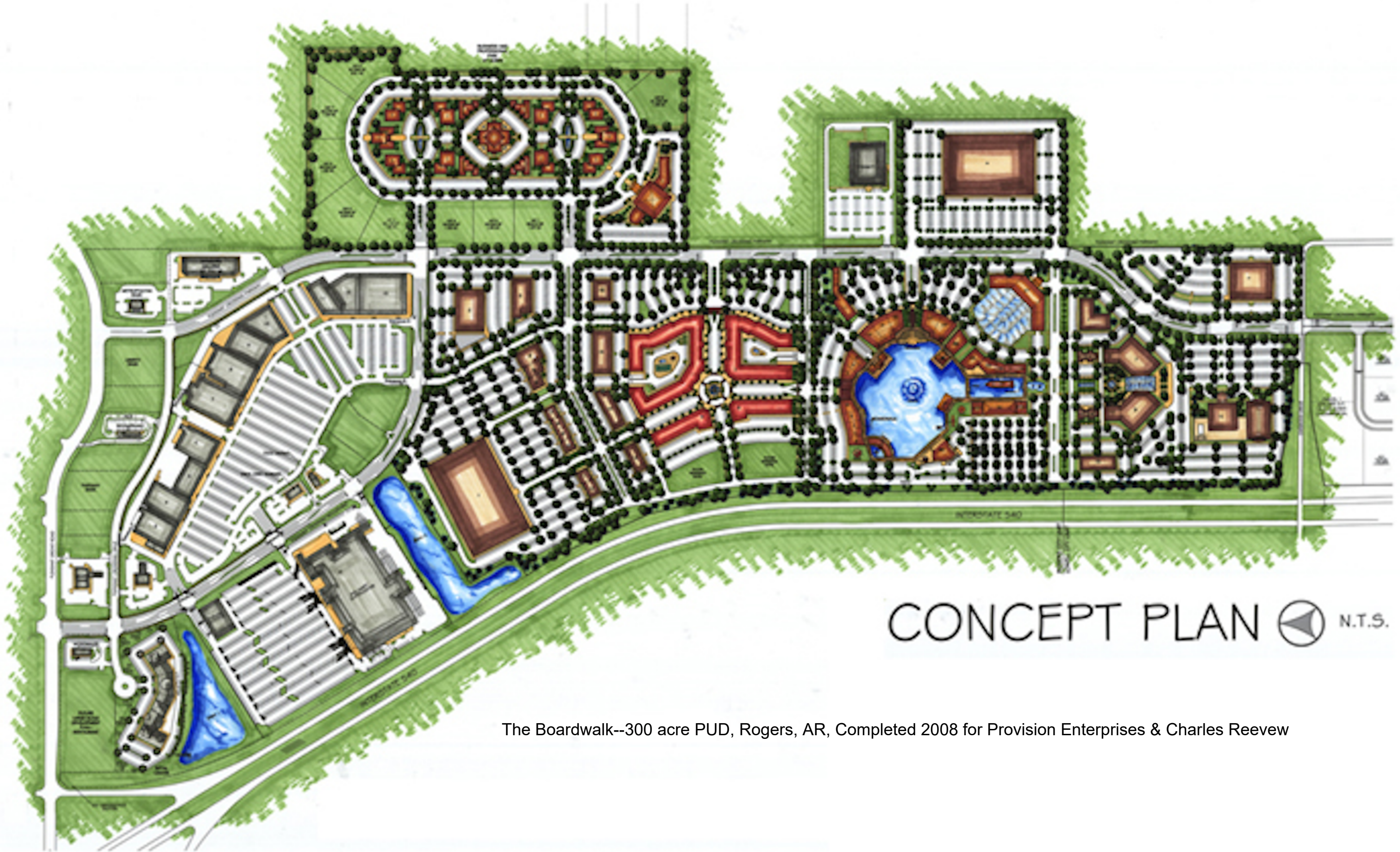
1/20/2010



SHEET 1 of 2

PLANT PLAN

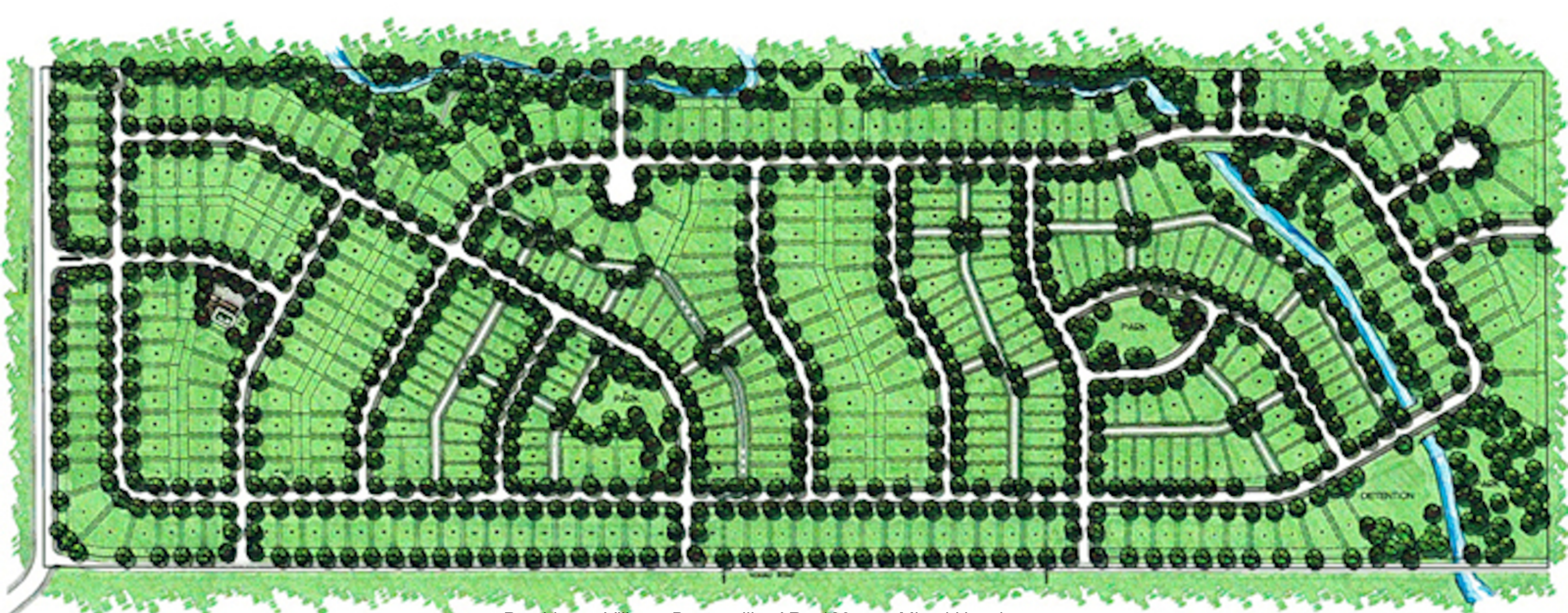




CONCEPT PLAN  N.T.S.

The Boardwalk--300 acre PUD, Rogers, AR, Completed 2008 for Provision Enterprises & Charles Reevew





Providence Village, Bentonville, AR - 120 acre Mixed Housing

A MASTER PLANNED COMMUNITY

SCALE 1" = 60' FEET



TO HIGHWAY 112

SHILOH DRIVE

RESTORE PRAIRIE
PROVIDES SHADOWN HABITAT

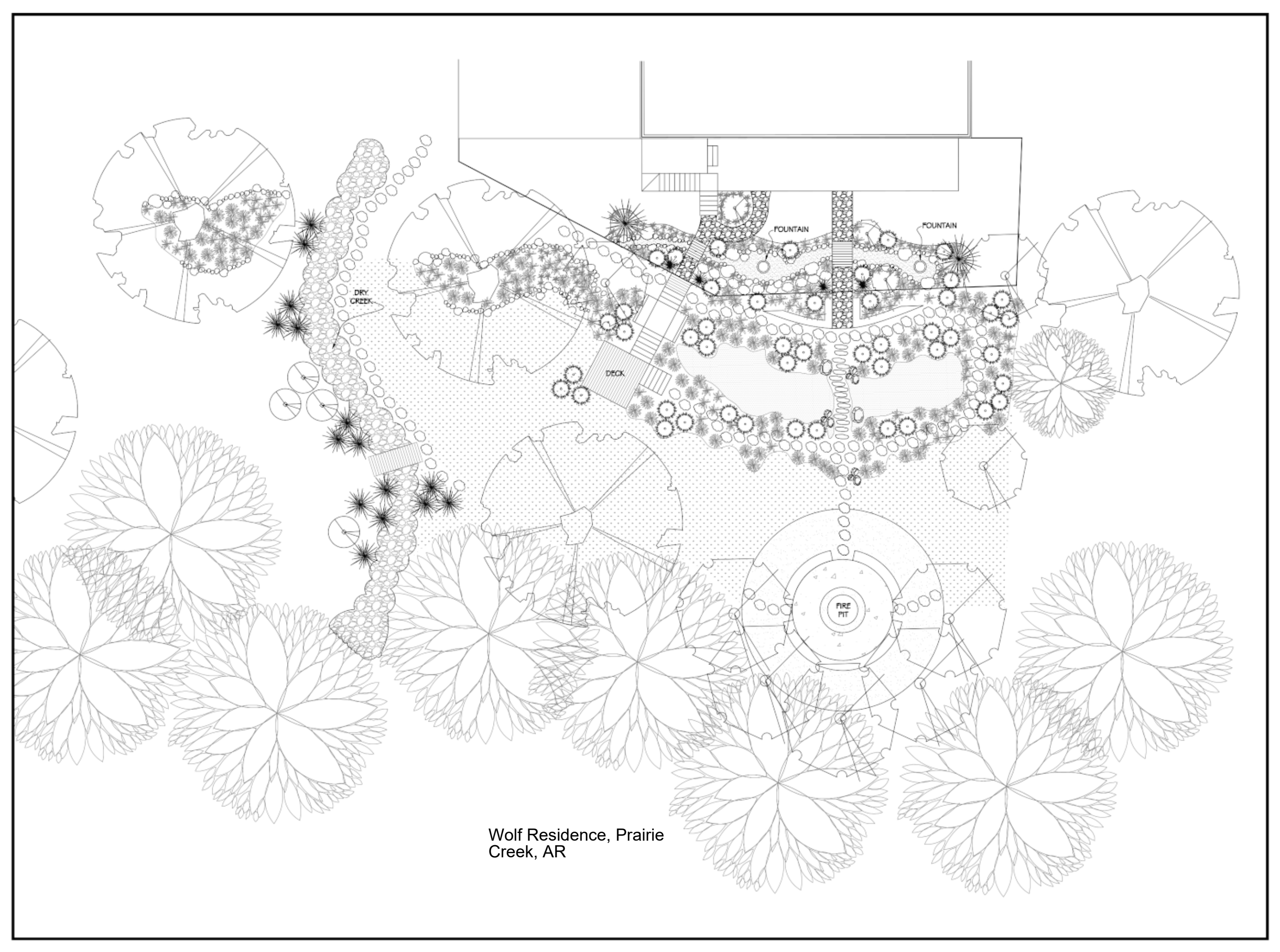
RESTORE PRAIRIE
PROVIDES SHADOWN HABITAT

RESTORE WETLANDS

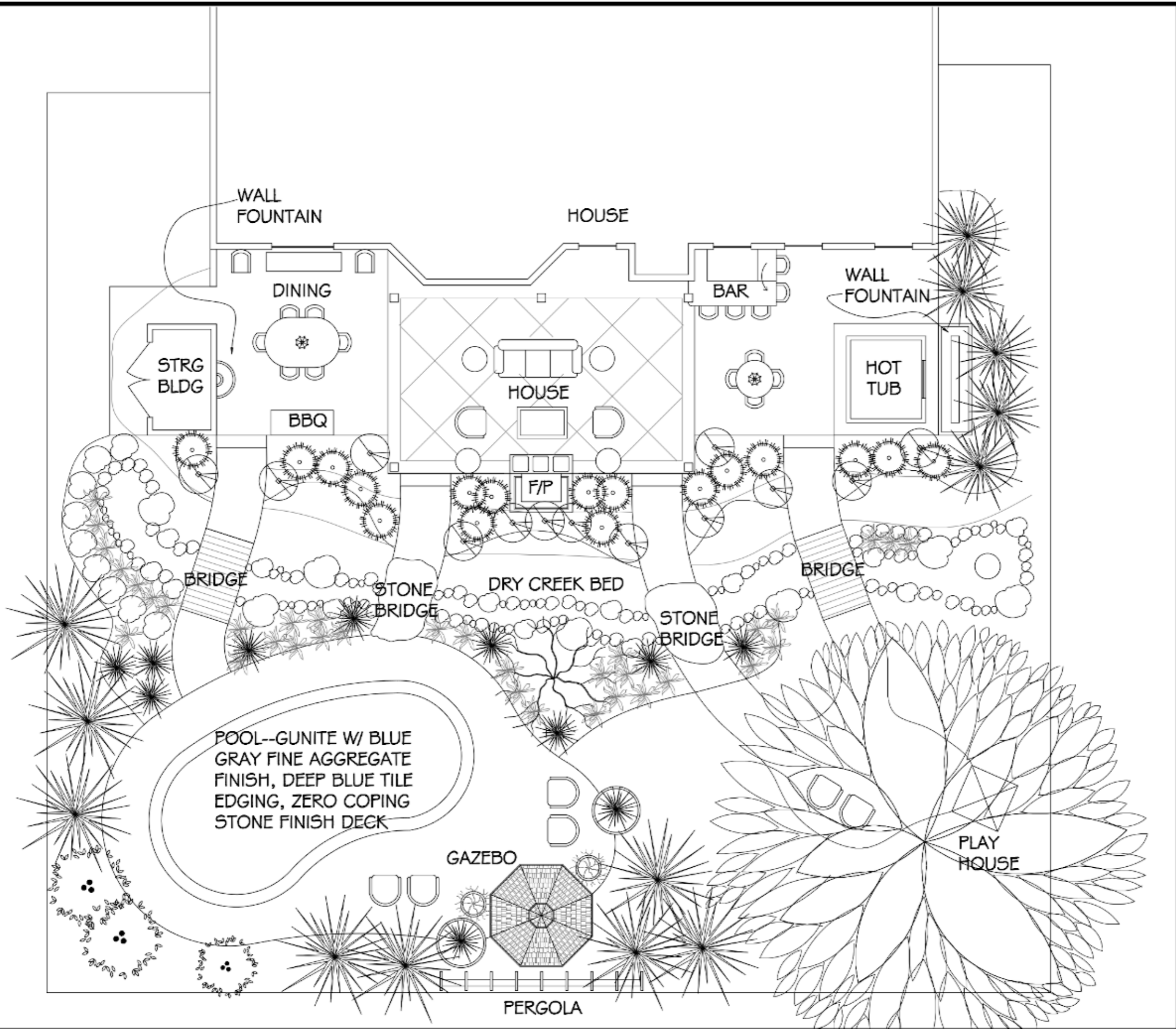
DEANE SOLOMON ROAD

Wilson Spring Technical Park Concept, Fayetteville, AR





Wolf Residence, Prairie
Creek, AR



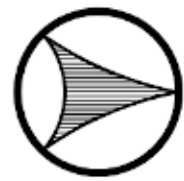
THE SCHLEGEL RESIDENCE
 SPRINGDALE, ARKANSAS
 RAY AND CHERI SCHLEGEL

**RICK SHELTON
 DESIGN**



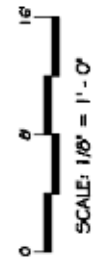
1963 USA LANE, FAYETTEVILLE, AR 72703
 Telephone (479) 530-6969 Fax (479) 571-2535
 www.ricksheltondesign.com

9/18/2008

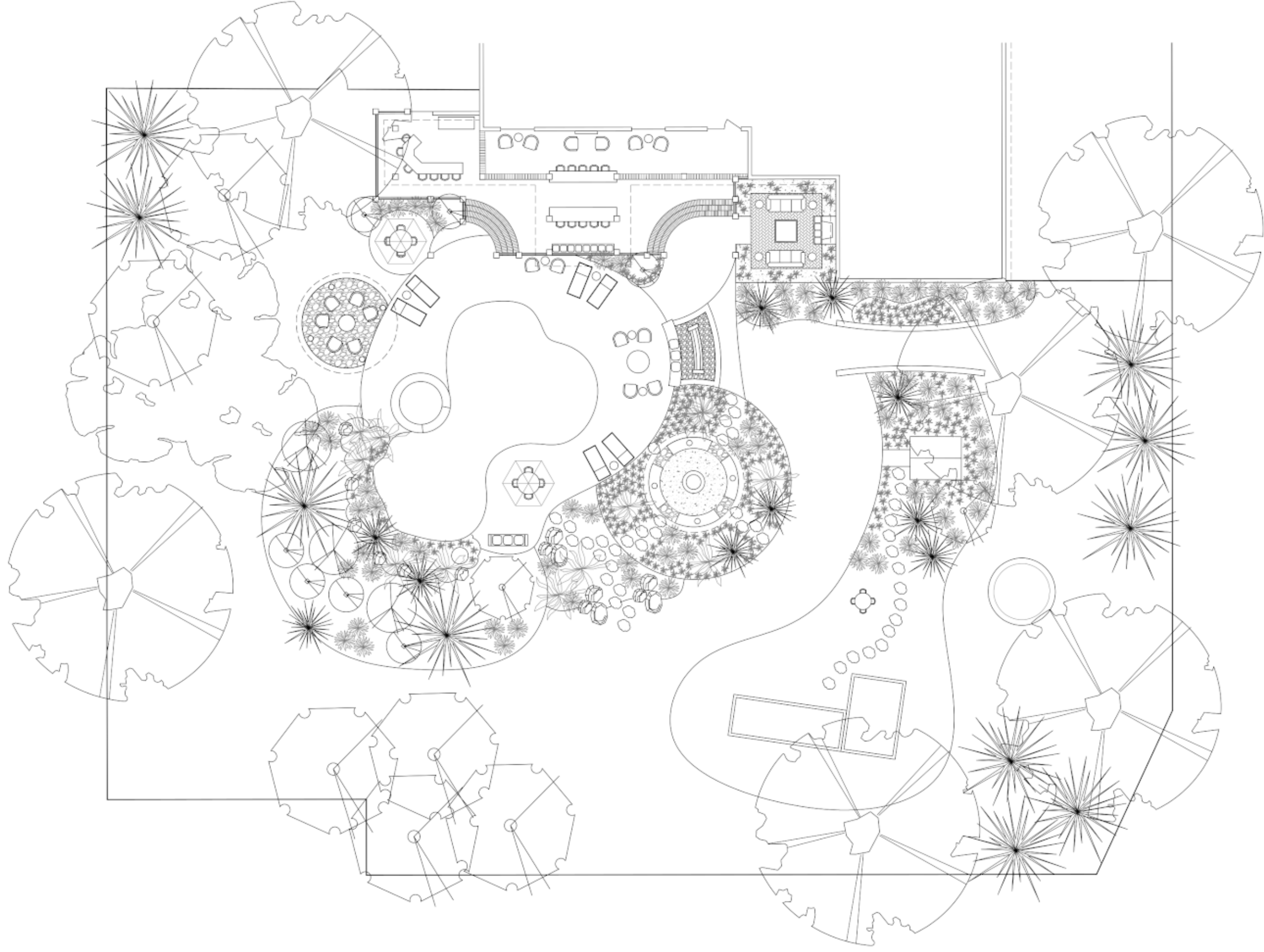


SHEET 1 of 5

SITE PLAN



SCALE: 1/8" = 1' - 0"

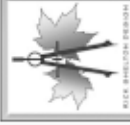
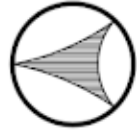


SHEET 1 of 10

MASTER PLAN



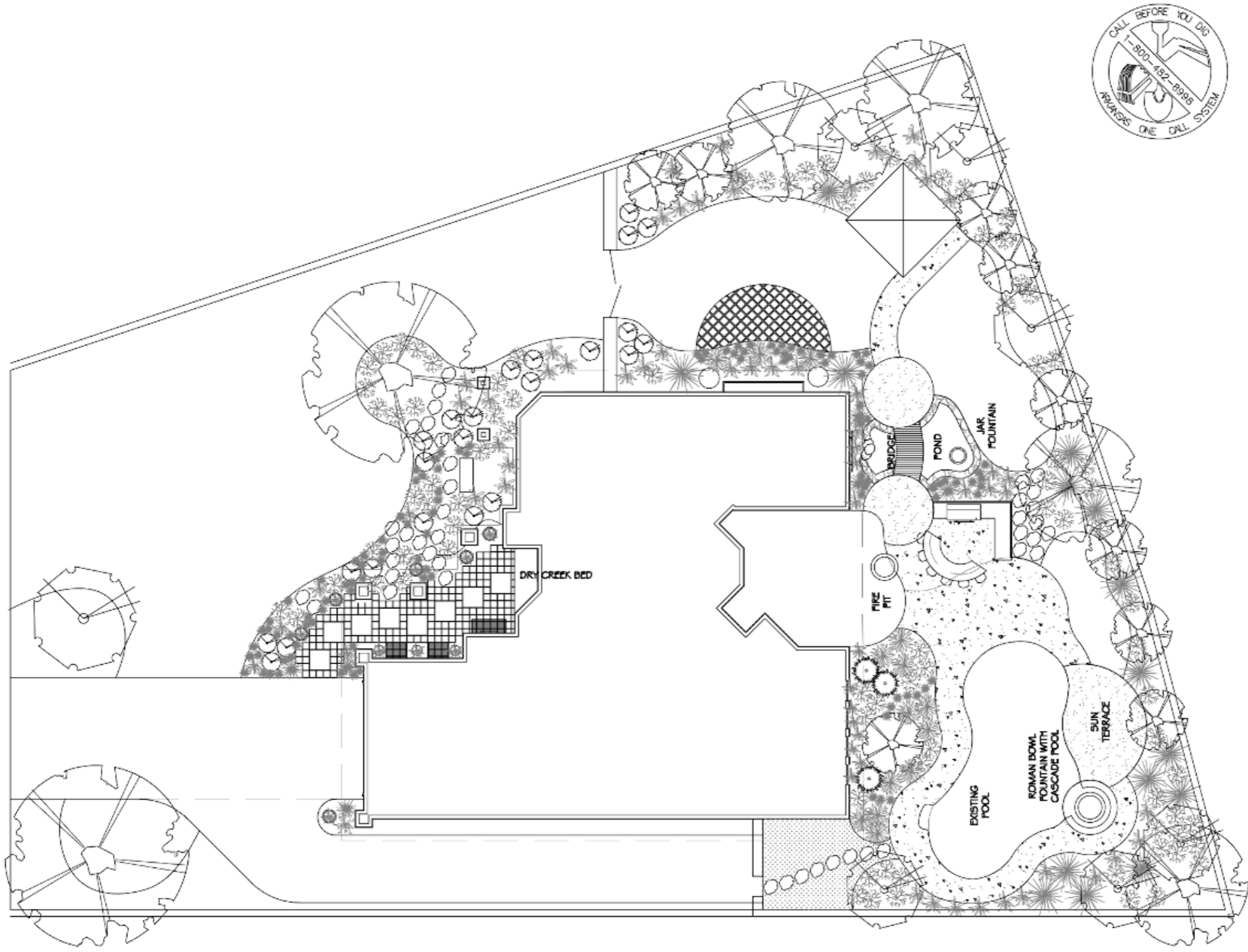
9/18/2008



RICK SHELTON
DESIGN

1963 LISA LANE, FAYETTEVILLE, AR 72703
Telephone (479) 530-6909 Fax (479) 571-2535
www.ricksheltondesign.com

THE SANDERS RESIDENCE
3459 N. BRIARGATE DR., FAYETTEVILLE, AR
TOM & JENNIFER SANDERS



SHEET 1 of 10

SITE



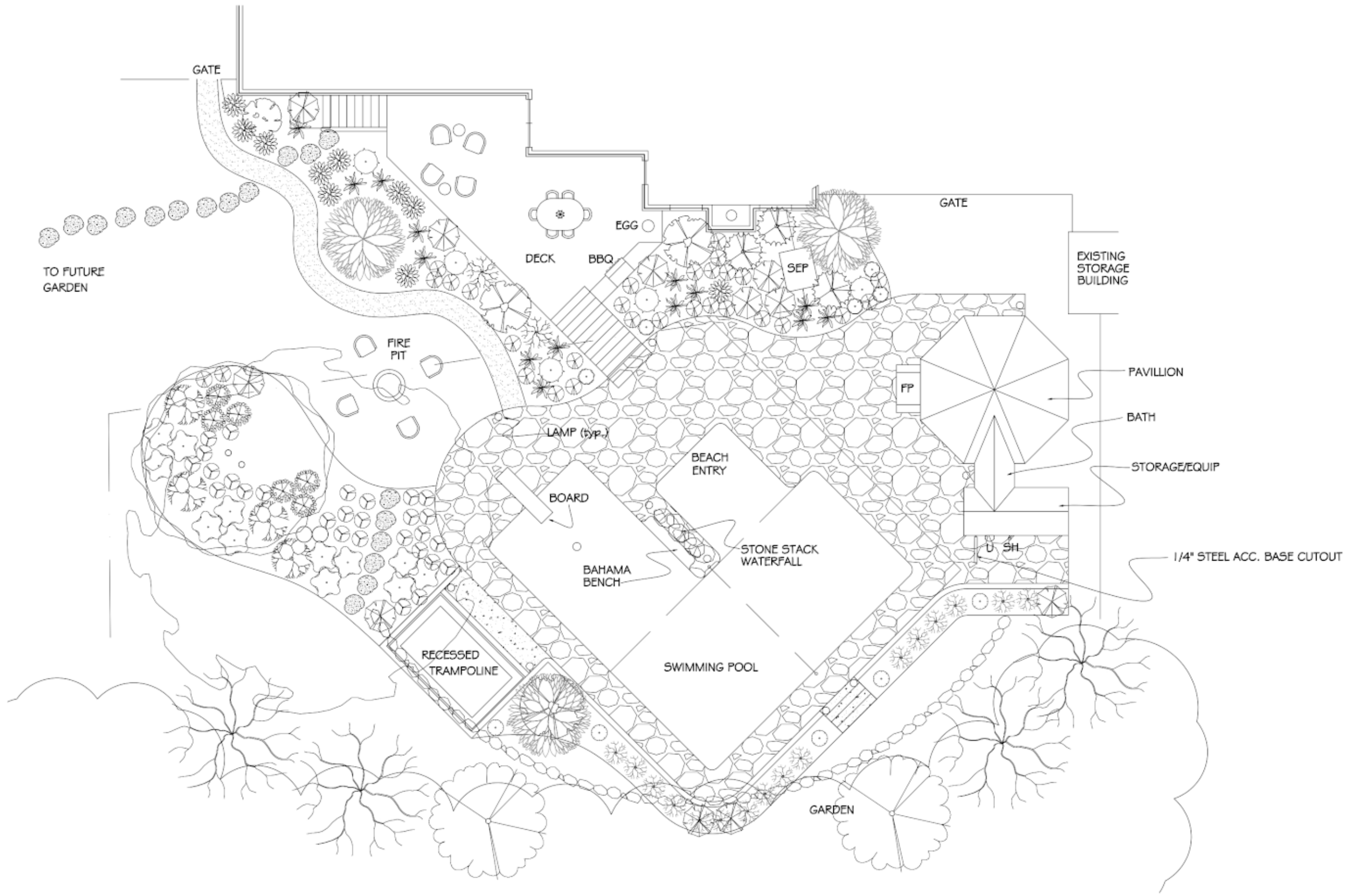
3/12/2009



**RICK SHELTON
DESIGN**

1963 USA LANE, FAYETTEVILLE, AR 72703
Telephone (479) 530-6989 Fax (479) 678-2623
www.ricksheltondesign.com

THE HORTON RESIDENCE
50 CHAMPIONS, ROGERS, ARKANSAS
BILL HORTON



The Bridgers Residence, Fayetteville

OVERALL SITE PLAN



Crye-Leike
Bella Vista
Office Site

Lee Town Crossing, Pea Ridge, AR

Carr St

Community First Bank



72

Townsend Way

Townsend Way

Sub-Stantial Inc



Sonic Drive-In



Rainbow House Asian

Bistro



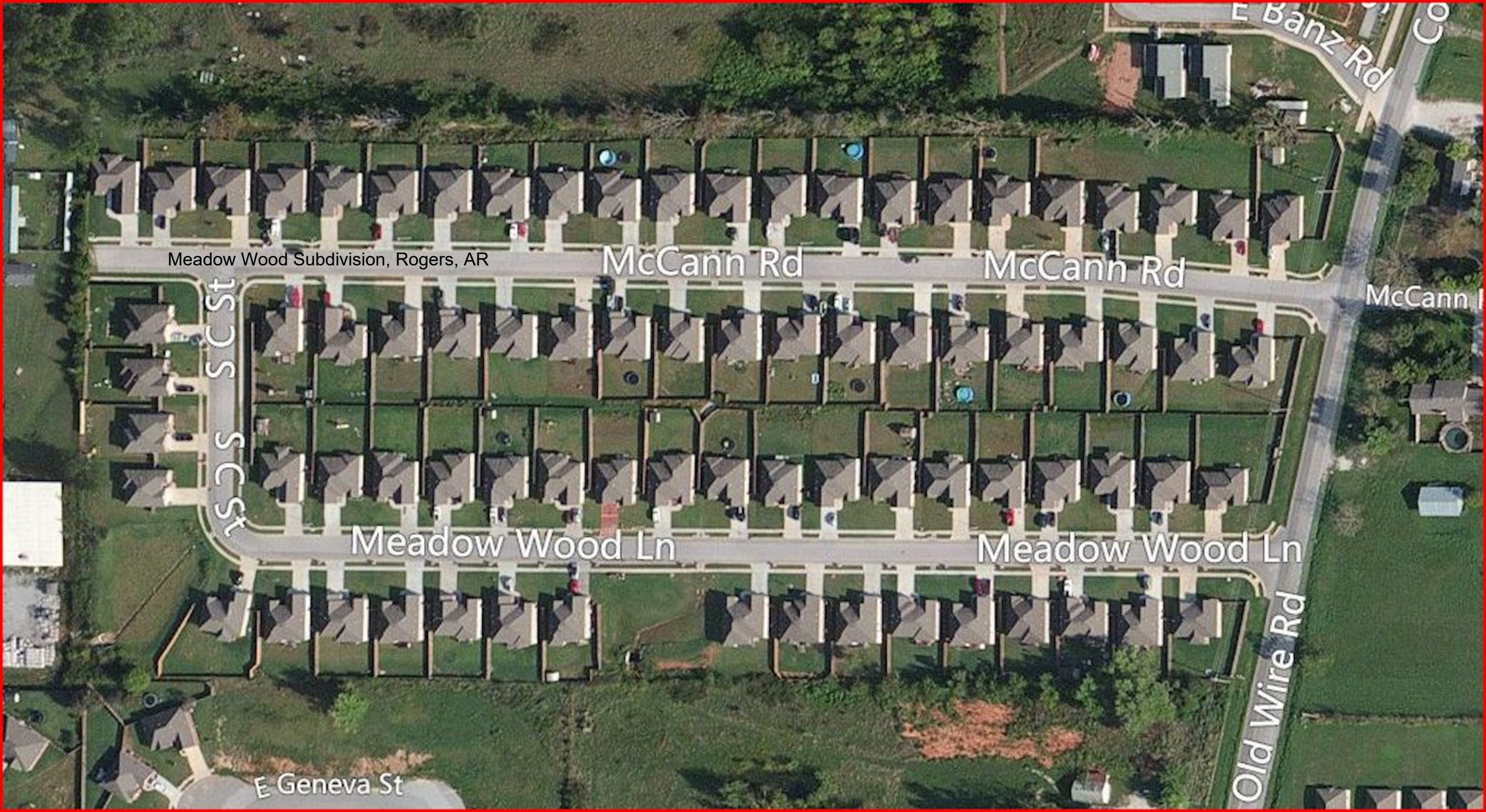
N Curtis Ave

72

N Curtis

Slack St

Lee



Meadow Wood Subdivision, Rogers, AR

McCann Rd

McCann Rd

McCann

S C St

Meadow Wood Ln

Meadow Wood Ln

Old Wire Rd

E Geneva St

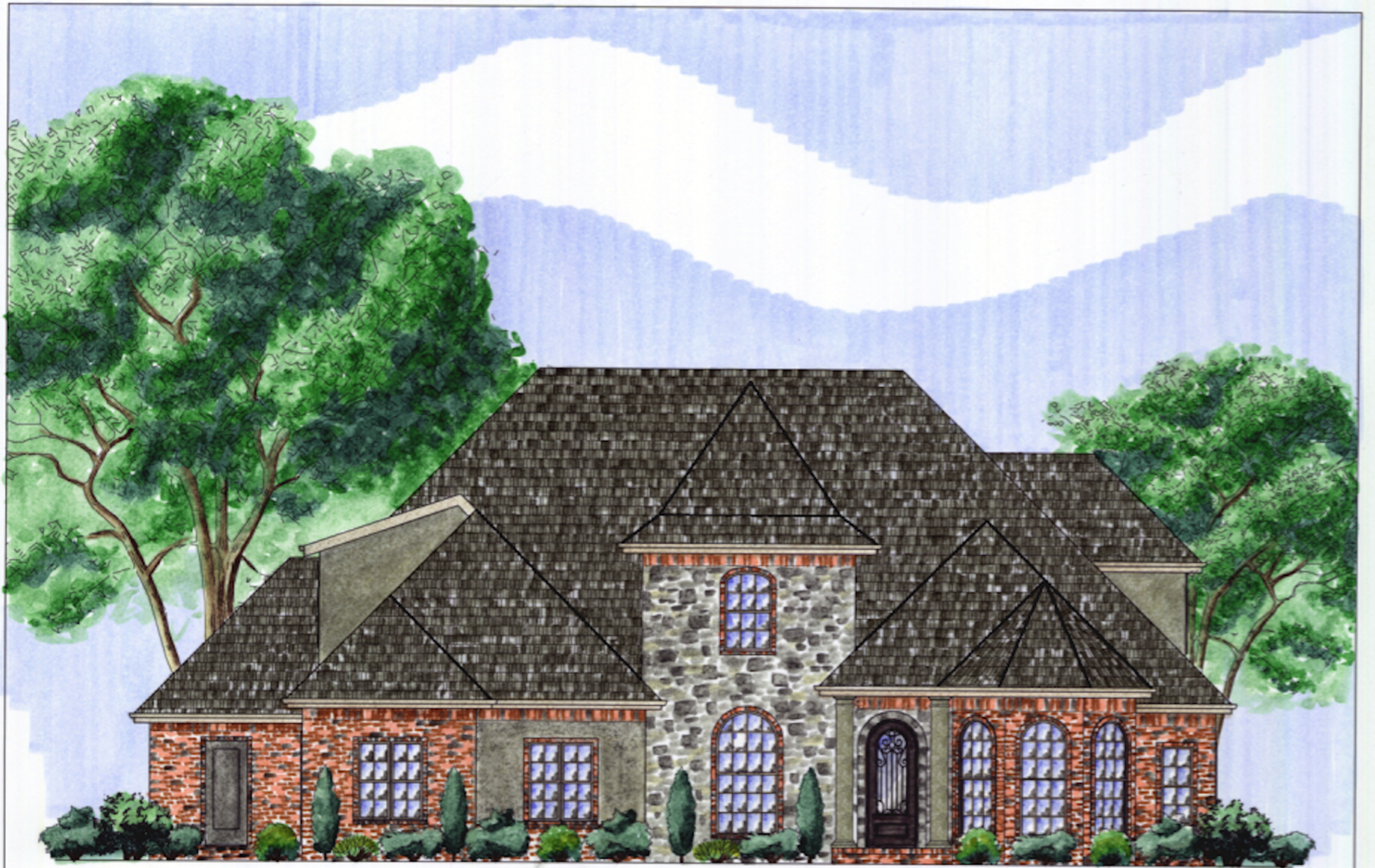
E Banz Rd

Winxinger Home Rendering - AD Markers





Enderle Home Rendering - AD Markers



Puttkammer Home Rendering - AD Markers



Horton Home Rendering - AD Markers



Harris Home Rendering - AD Markers